

Ascocoryne cylichnium* var *cylichnium

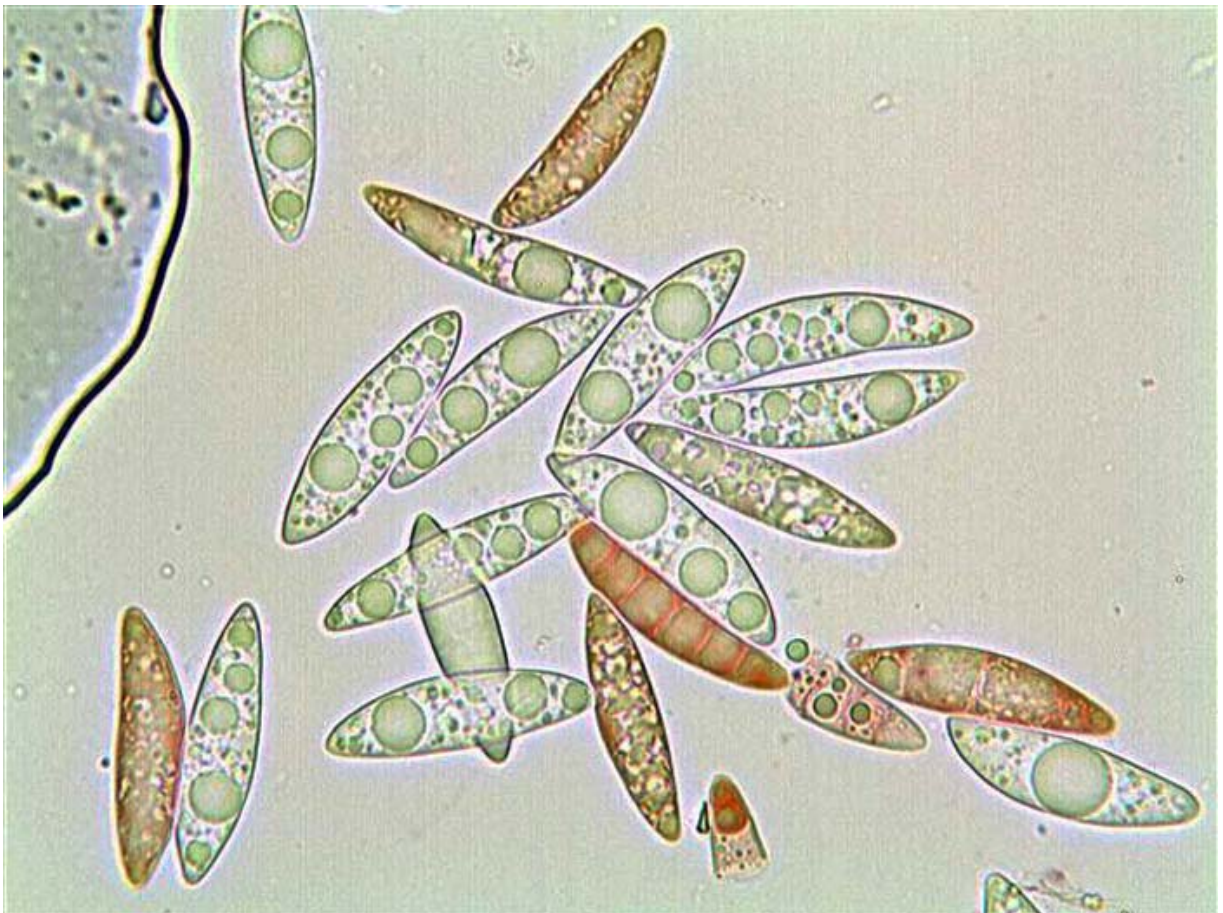


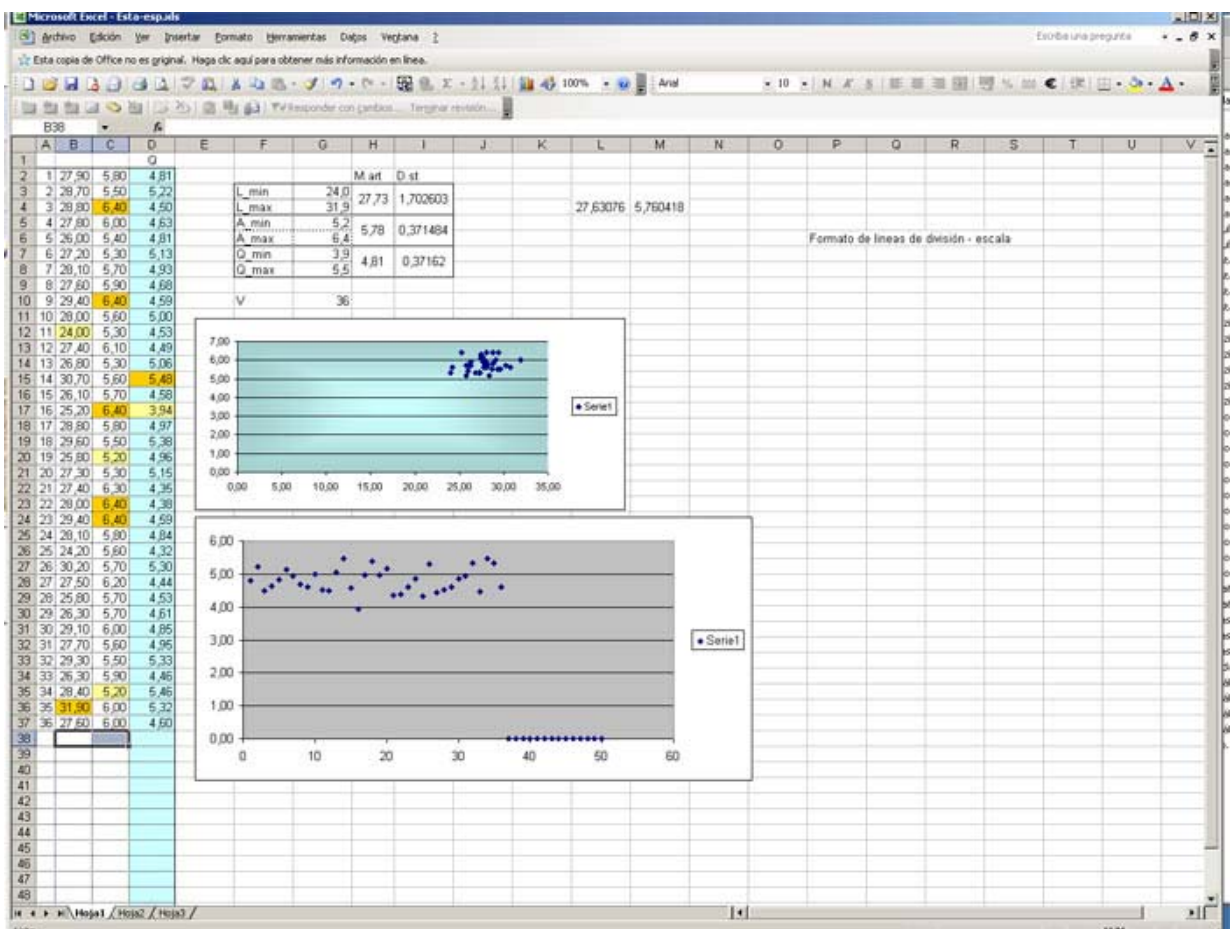
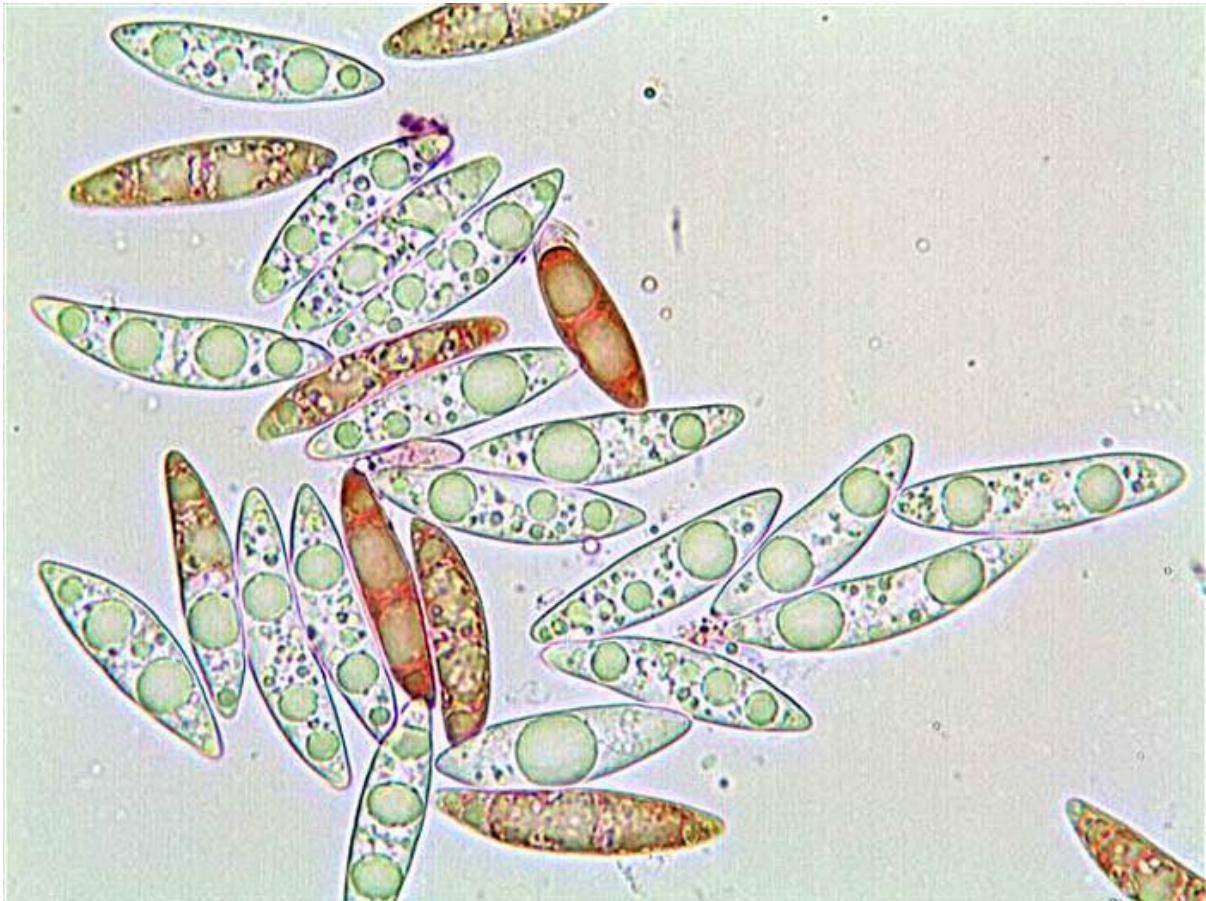
El 27/11/2010, sobre tronco en descomposición de *Pinus nigra*





Crozieria



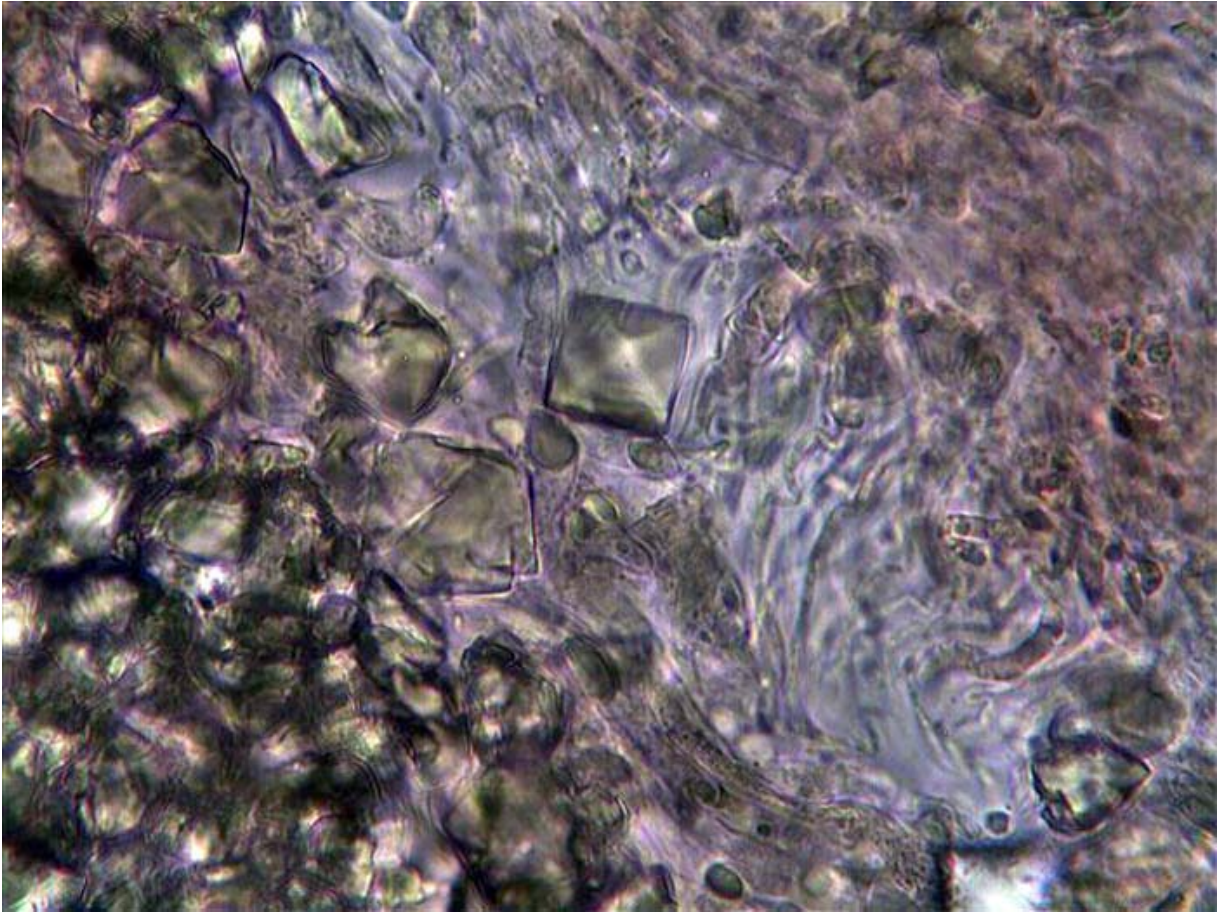


Esporas de 24-31,9 x 5,2-6,4 micras. Q=3,9 (4,8) 5,5 Hasta 6 septos

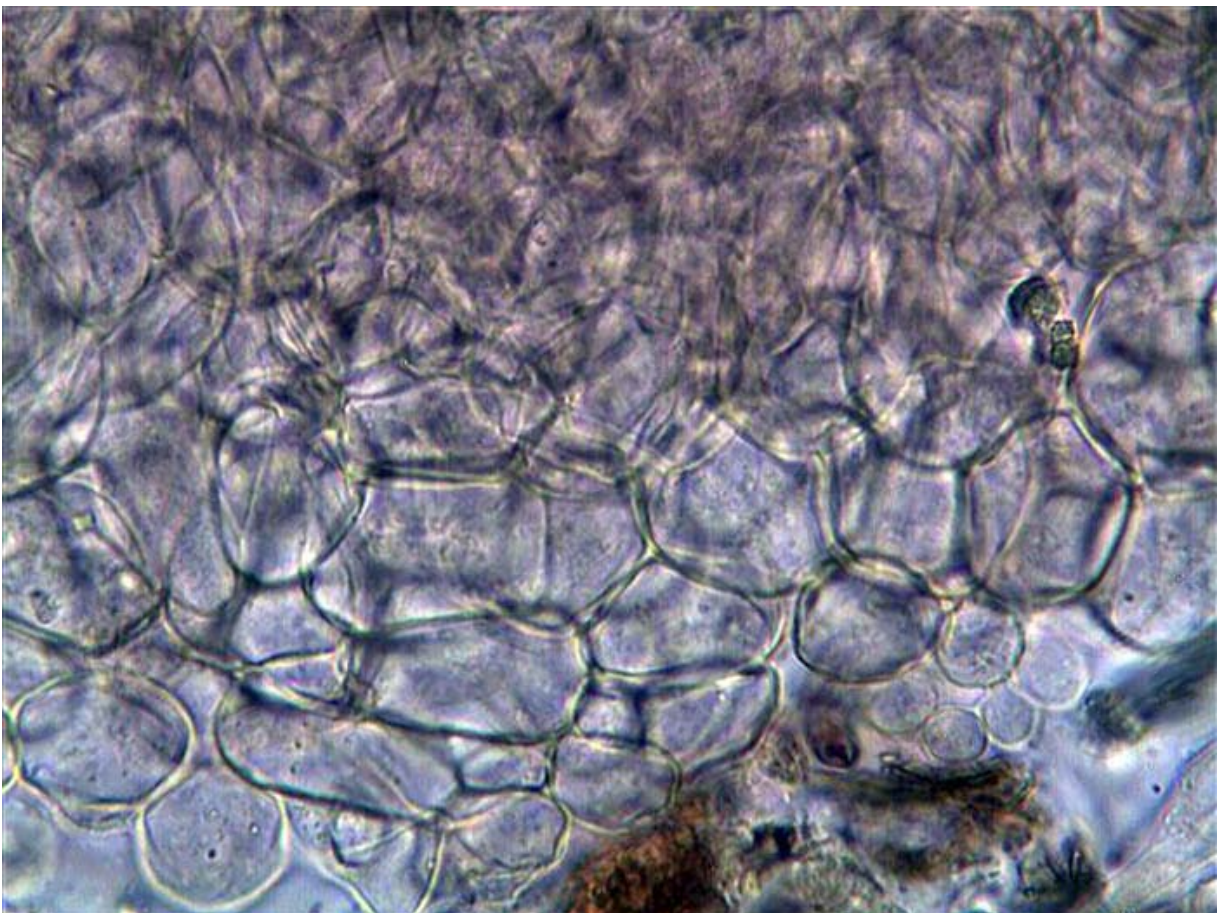


Parafisis





Cristales oxalato cálcico



Celulas del excípulo.



Esporas y conidios

