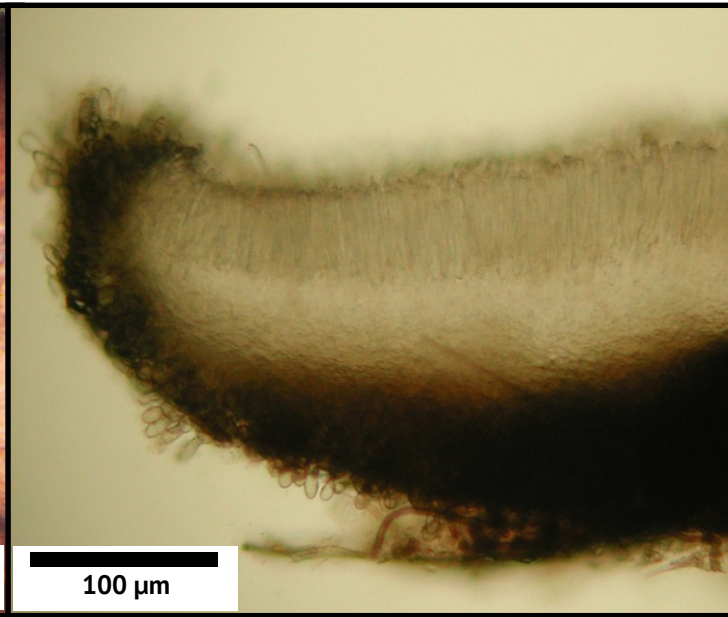
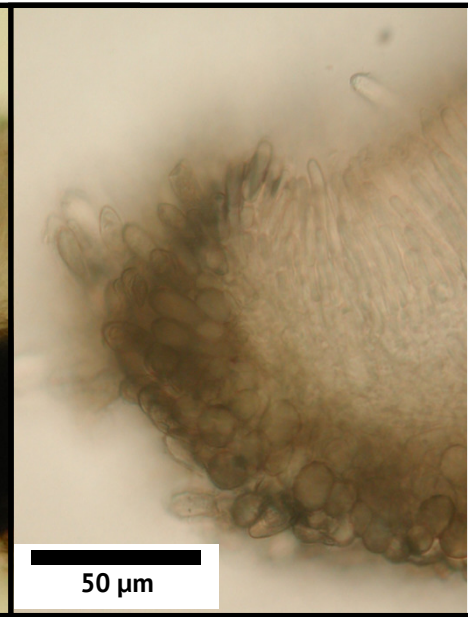


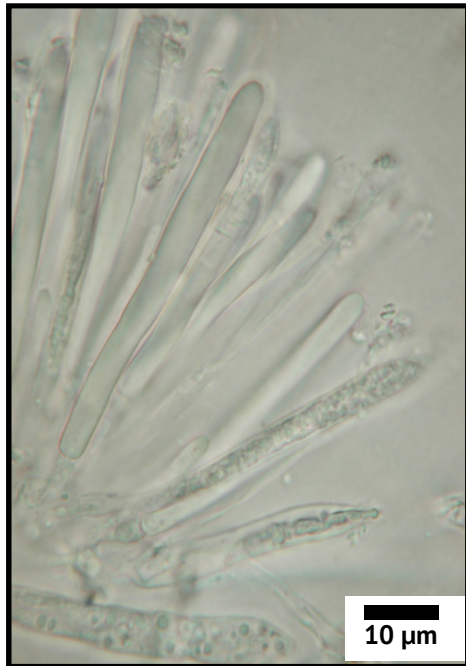
1000 μm



100 μm



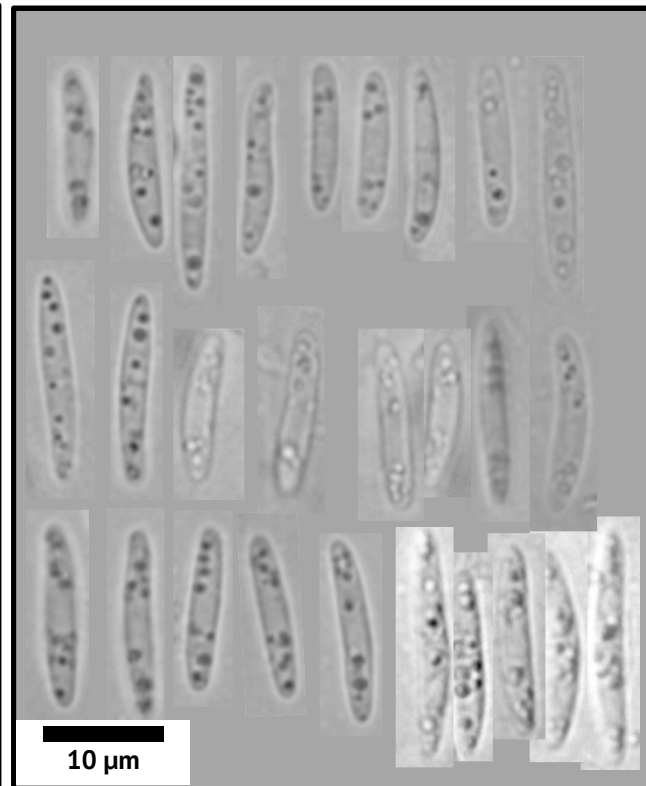
50 μm



10 μm



10 μm



10 μm

Mollisia AB1

Substrate: Dead *Cortaderia* (pampas grass) culms in plant litter.
Location: Waunfawr, Aberystwyth (found on several culms), Long/lat. 52.415967, -4.053800.

Notes: Very closely related to *Mollisia* cf. *poaeoides* PEN7 (96.5% ITS similarity, differing in 19 unconnected SNPs), but possessing longer ascospores (maximum length), and with considerably darker-pigmented apothecia.

Ascospores: 13.9 (11.4-17.9, stdev=1.91) x 2.25 (1.9-2.8, stdev=0.23) (N=28). Always containing numerous oil droplets throughout the ascospore, sometimes 1-septate.

Brian Douglas
pyrenopeziza@gmail.com 2014