

## AL2401\_05-1 *Neobelonopsis* aff. *acutata*

Description: **Apothecium** scattered or gregarious on rotten wood, 0.7-1.2 mm diam. **Disc** pale gray. **Ectal excipulum** textura angularis- globulosa, cell 5.9-13.4 x 4.3-9.1  $\mu\text{m}$ , becoming slender and smaller at the upper flank, pale brown to brown, hemispherical to short clavate at the margin. **Medullary excipulum** textura intricata, cell 1.1-2.2  $\mu\text{m}$  diam, hyaline. **Asci** cylindric-clavate, 76.3-94.7 x 8.5-9.6  $\mu\text{m}$  (10), inoperculate, ascus pore walls amyloid, arising from croziers, 8-spored, biseriata, ascospores located in the anterior quarter of the ascus. **Ascospores** fusiform and slightly curved, 10.0-17.7 x 2.6-3.3  $\mu\text{m}$ , 1-3 septate, hyaline. **Paraphyses** cylindrical, obtuse at tip, 2.2-3.6  $\mu\text{m}$  width, shorter than asci, septate, unbranched, contain VBs. **Colony** form spore on PDA at 20°C after 1 month, 15.3-17.8 mm diam, fasciculate, beige to pale yellow, margin filiform, with concentric ring, reverse side darker, beige to brown, without soluble pigment and crystals, hyphae brown.

### Note:

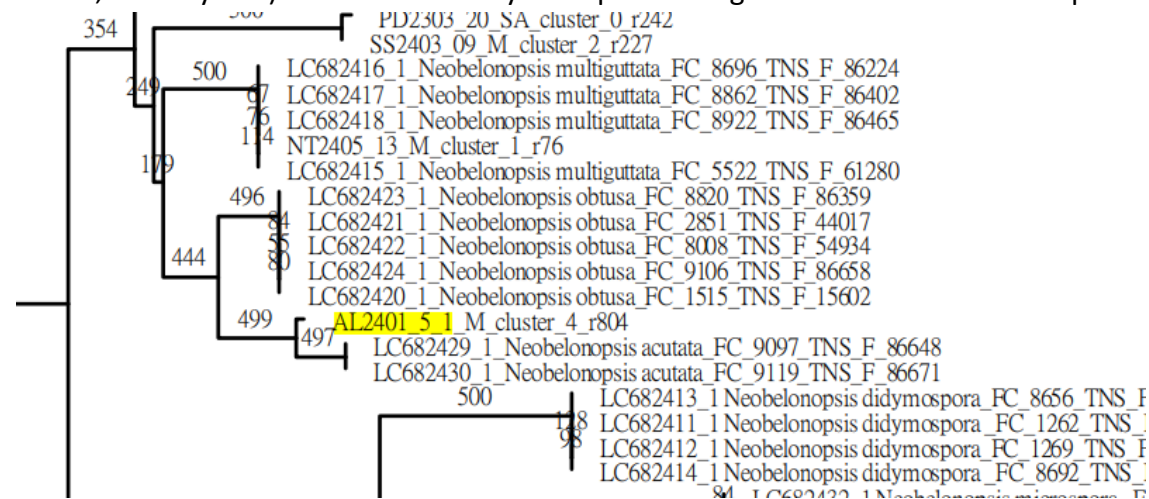
LC682424.1 *Neobelonopsis* obtusa similarity 94.90%

LC682430.1 *Neobelonopsis* acutata FC-9119 similarity 99.07%

*N. acutata* ascospores 15–22(–27.5) x 2.5–3.5  $\mu\text{m}$ , long fusiform, with acute apices.

### References:

Itagaki, H., & Hosoya, T. (2023). A new genus *Neobelonopsis* and two new species of *Trichobelonium* (Helotiales, Ascomycota) discovered mainly from poaceous grasses native to Asia in Japan. *MycKeys*, 99, 45.



**AL2401\_05-1** *Neobelonopsis* sp. (A-B) Apothecium on rotten wood. (C) Vertical section of apothecium.

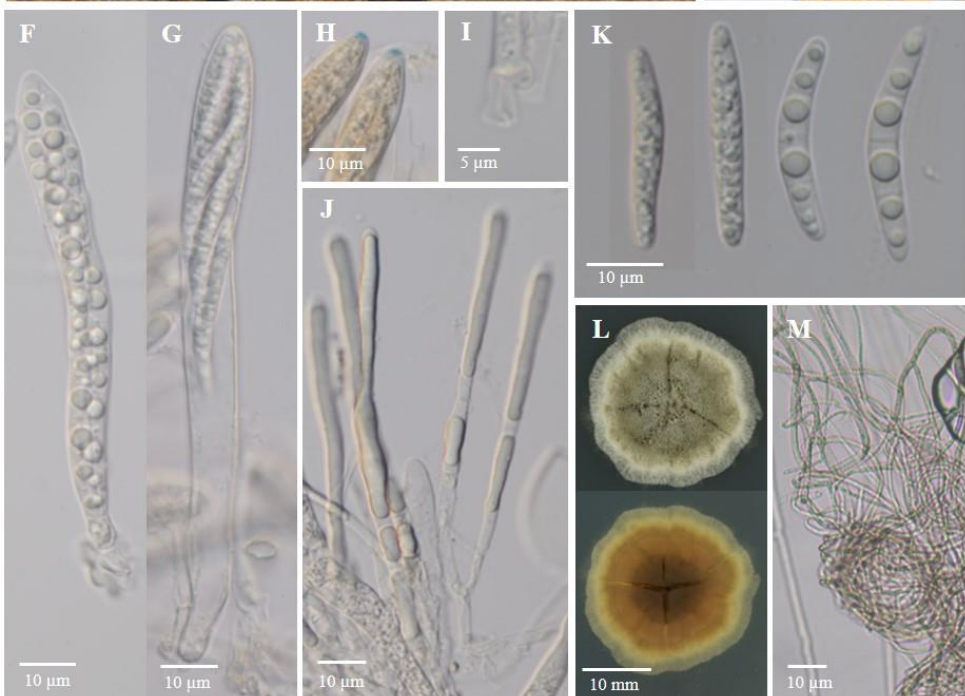
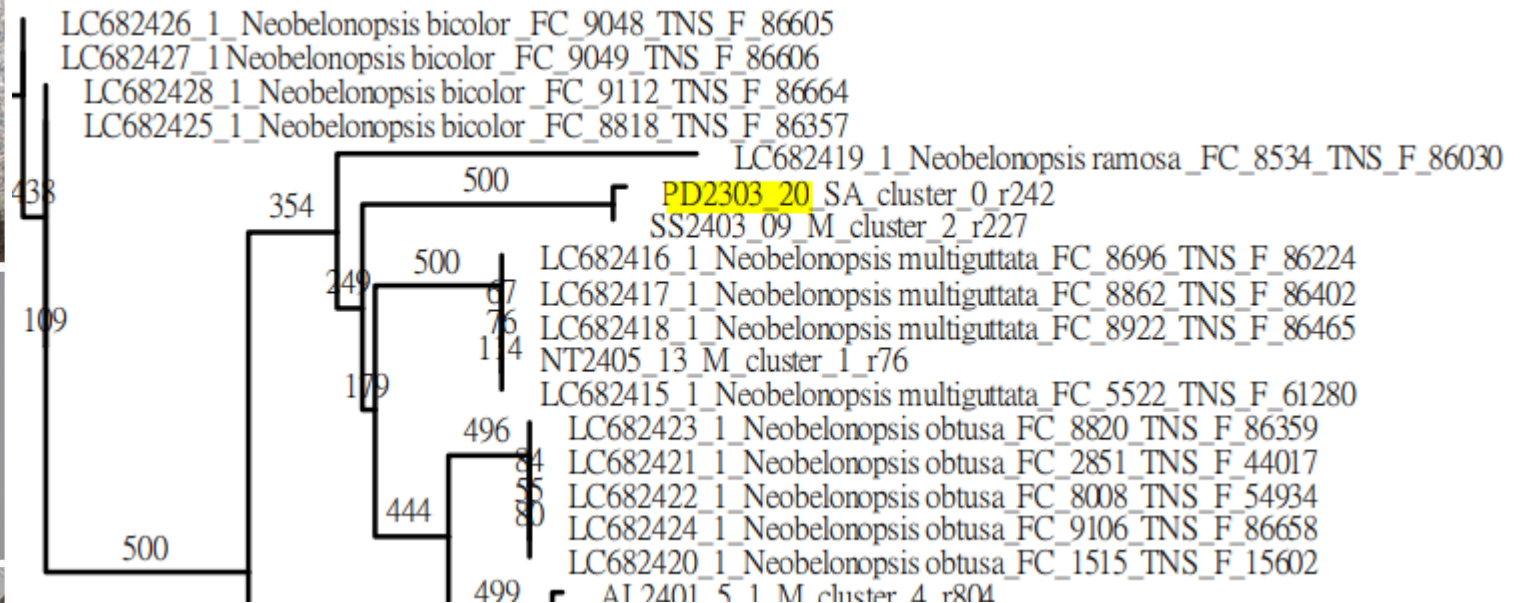
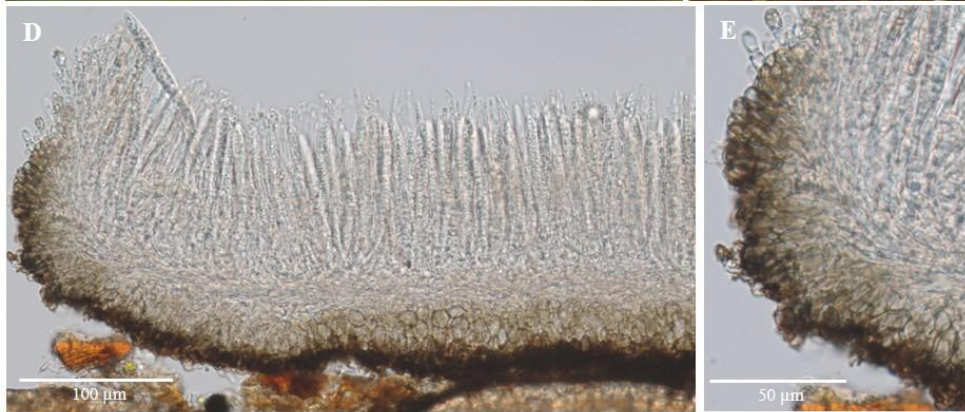
(D) Ectal excipulum. (E) Asci with ascospores. (F) Asci and paraphyses. (G) Paraphyses. (H) Amyloid

reaction (in IKI). (I) Ascospores. (J) Colony on PDA. (K) Hyphae (1/3PDA).

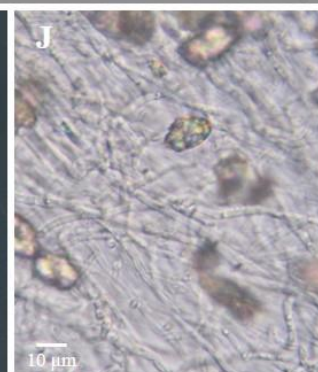
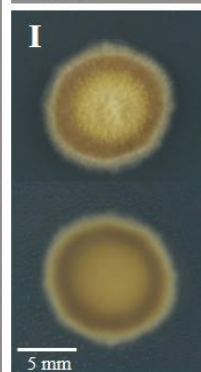
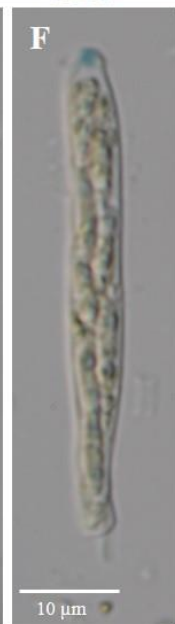
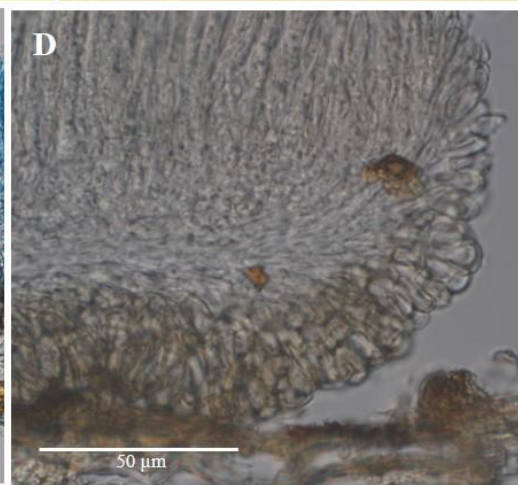
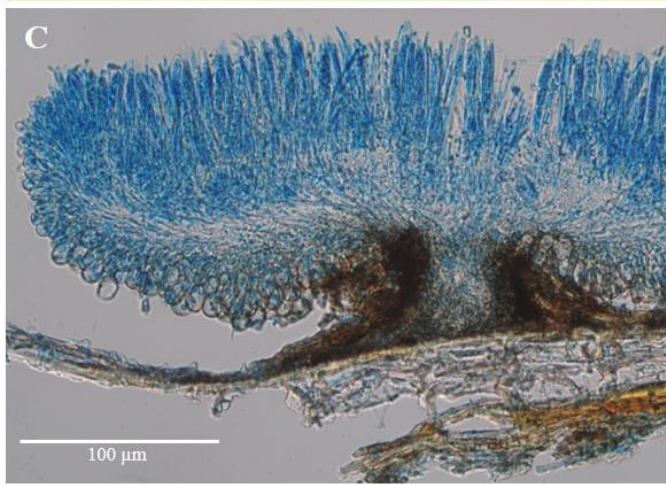


## PD2303\_20\_ *Neobelonopsis* sp.

Description: **Apothecium** scattered on herb stems, 0.7-1 mm diam, 0.1 mm height. **Disc** gray, flat. margin bulge. **Receptacle** black brown, sessile. **Ectal excipulum** 42.7-14.2  $\mu\text{m}$  width, textura angularis, cell 7.0-16.4 x 5.0-7.7  $\mu\text{m}$ , brown, margin deep brown. **Medullary excipulum** 20.2-32.8  $\mu\text{m}$  width, textura intricata, cell 1.2-2.6  $\mu\text{m}$  wide. **Asci** cylindric-clavate, 83.5-120.7 x 7.6-10.5  $\mu\text{m}$ , inoperculate, arising from croziers, apex amyloid, 8-spored, ascospores located in the anterior half of the ascus. **Ascospores** fusiform, sometimes curved, 24.2-31.8 x 3.3-4.1  $\mu\text{m}$ , 3 septate, usually 6-5 guttules. **Paraphyses** cylindrical, obtuse at tip, 2.8-3.6  $\mu\text{m}$  width, septate, branched, contain VBs. **Colony** form spore on PDA at 20°C after 1 month, 22.7-24.2 mm diam, dense, margin irregular, radially sulcate, grey to pale grey, reverse side brown to light yellow, hyphae brown.



**PD2303\_20\_ *Neobelonopsis* sp.**(A-C) Apothecium on the bamboo. (D) Vertical section of apothecium. (D-E) Ectal excipulum. (F) Asci with ascospores. (G) Paraphyses. (H) Amyloid reaction (in IKI). (I) Ascospores. (J) Ascospores.(cotton blue) (K-L) Colony on PDA. (M) Hyphae (1/3PDA).



## PD2303\_04\_ *Mollisia* cf. *anserina*?

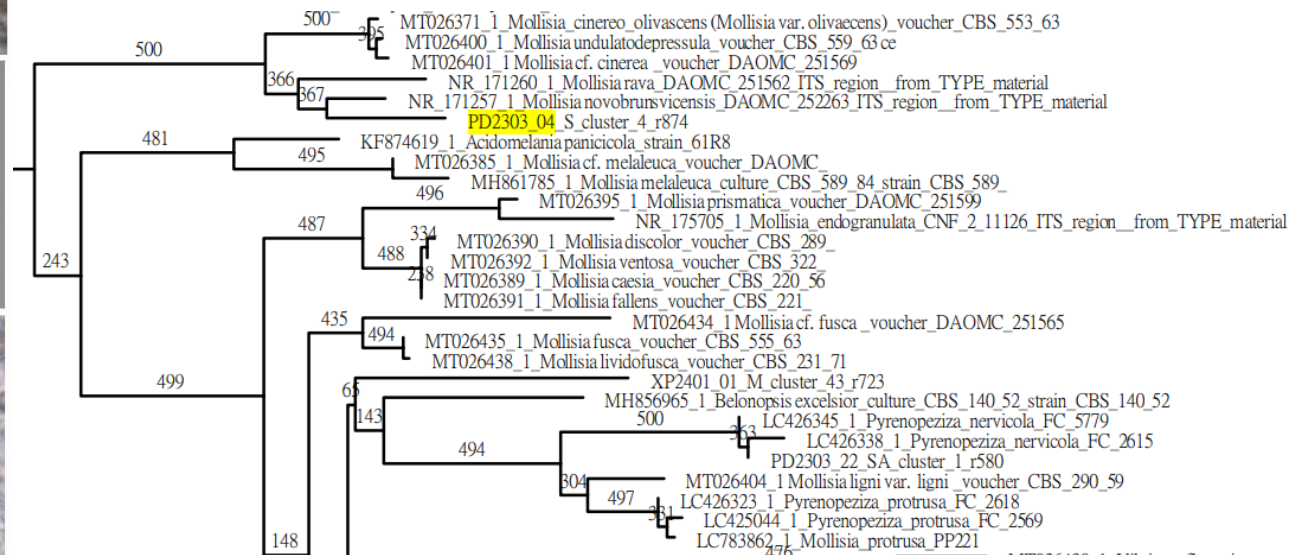
Description: **Apothecium** scattered on herb stems(?), 0.25 -0.4 mm diam, short stipe, white, translucent, protrude plant surface. **Disc convex. Ectal excipulum** 15.2-29.0  $\mu\text{m}$  width, textura angularis, hemispherical at the margin, cell 8.7-14.5 x 4.2-10.3  $\mu\text{m}$ , light brown. **Medullary excipulum** 9.5-14.5 width, textura intricata, cell 0.8-1.6  $\mu\text{m}$  width. **Asci** cylindric-clavate, 47.2-54.5 x 4.5-5.3  $\mu\text{m}$  (6, immature), inoperculate, arising from croziers, ascus pore walls amyloid 8-spored. **Ascospores** ellipsoid to fusiform, 7.1-9.6 x 1.7-2.0  $\mu\text{m}$ , aseptate, 1-multiguttules. **Paraphyses** filiform, obtuse at tip, 1.6-2.1  $\mu\text{m}$  width, septate. **Colony** form spore on PDA at 20°C after 1 month, 9.6-14.3 mm diam, flocculent, margin filiform, yellow to drab color, margin light yellow, same color on reverse side, hyphae hyaline, with crystals.

### Note:

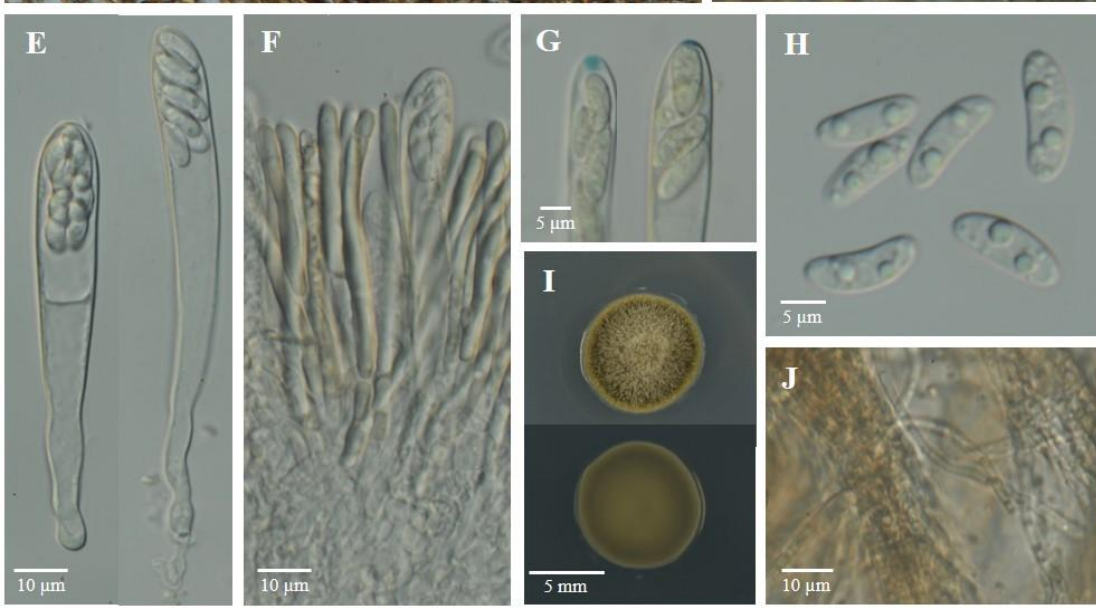
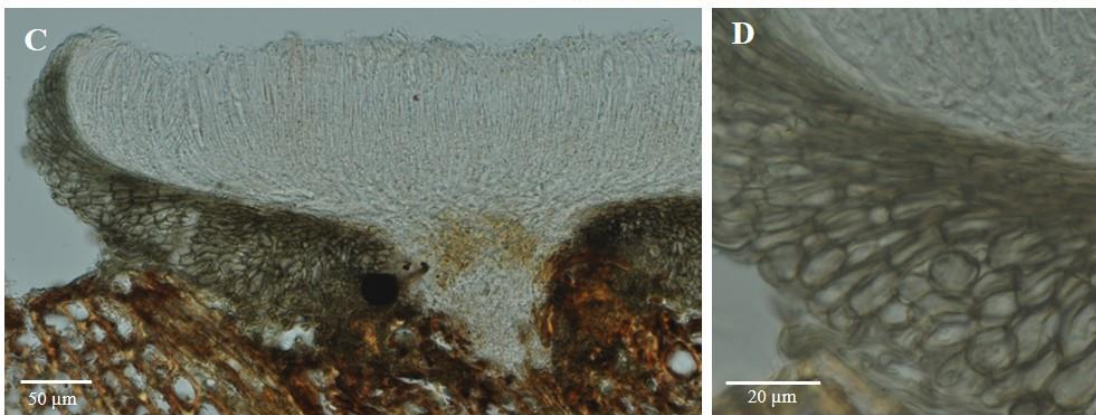
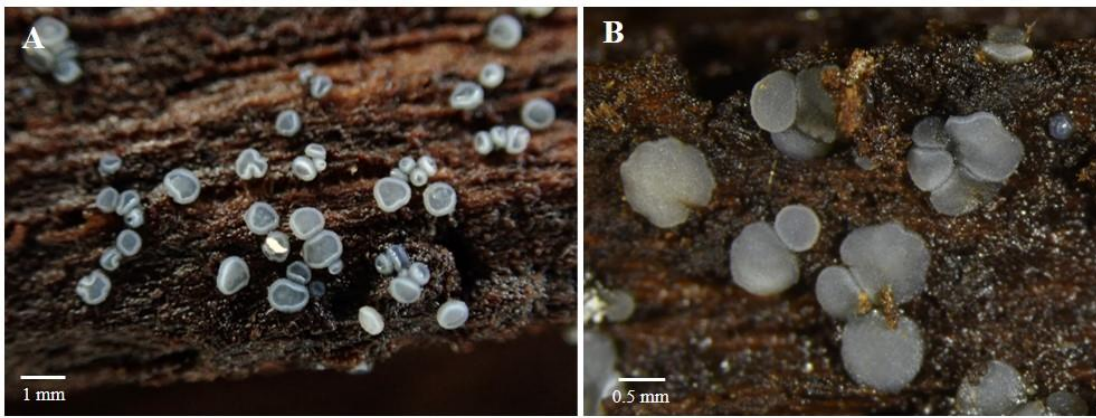
*Mollisia anserina*: Apothecia 0.2–0.5 mm diam, on grass leaf (?). Asci 35–38 x 4–4.5  $\mu\text{m}$ , with croziers. Ascospores narrowly elliptical, 7–8 x 2  $\mu\text{m}$ .

### References:

Gminder, A. N. D. R. E. A. S. (2006). Studies in the genus *Mollisia* sl II: Revision of some species of *Mollisia* and *Tapesia* described by J. Velenovsky (part 1). *Czech Mycology*, 58(1/2), 125.

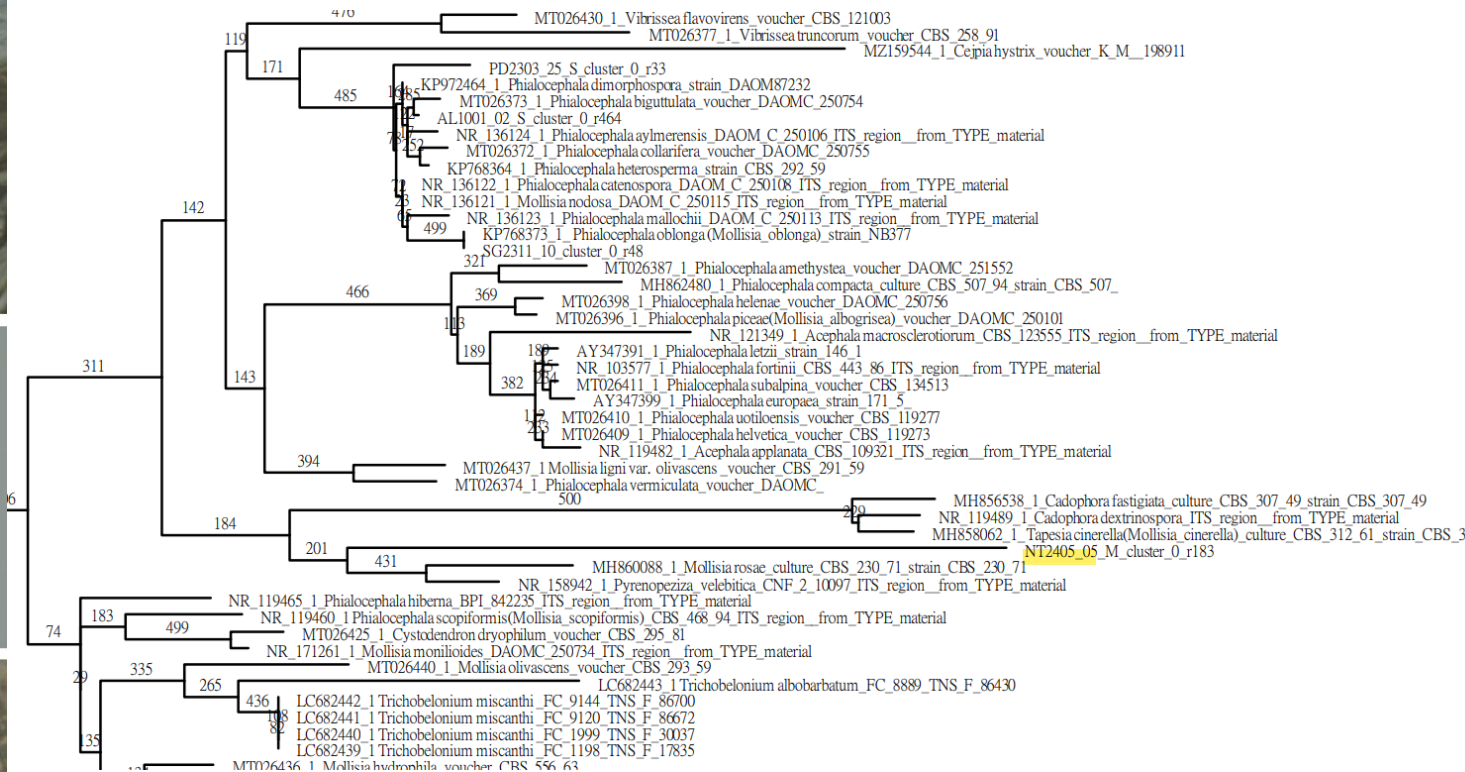


**PD2303\_04\_ *Mollisia* cf. *anserina*.** (A-B) Apothecium on the bamboo. (C-D) Vertical section of apothecium. (E) Asci (immature) (F) Amyloid reaction (in IKI). (G) Paraphyses. (H) Ascospores (I) Colony on PDA. (J) Hyphae (1/3PDA).



## NT2405\_05

Description: **Apothecium** gregarious or clustered on on rotten wood, 0.3-1 mm, gray, short stipe, protrude plant surface. . **Disc flat**. **Ectal excipulum** textura angularis to textura prismatica, lower side 42.5-84.9  $\mu\text{m}$  width, , 6.1-10  $\mu\text{m}$  at the upper flank, angularis cells on the outside, cell 7.3-13.9 x 5.2-9.1  $\mu\text{m}$ , brown, prismatica cells on the inside, cell 8.9-14.0 x 2.3-3.4  $\mu\text{m}$ , transparent to brown. **Medullary excipulum** textura intricate. **Asci** cylindric-clavate, 78.0-99.6 x 9.1-11.1  $\mu\text{m}$ , inoperculate, ascus pore walls amyloid, arising from croziers, 8-spored, biseriate, ascospores located in the anterior third of the ascus. **Ascospores** allantoid, sometime slightly curved, 10.8-13.8 x 3.5-4.5  $\mu\text{m}$ , aseptate biguttules, hyaline. **Paraphyses** cylindrical, obtuse at tip, 2.4-3.4  $\mu\text{m}$  width, septate, cotain VBs. **Colony** form spore on PDA at 20°C after 1 month, 7.3-8.2 mm daim, fasciculate, dense, margin filiform, yellowish brown to olive brown, same color on reverse side, hyphae yellowish brown.



**NT2405\_05** (A-B) Apothecium on rotten wood. (C) Vertical section of apothecium. (D) Ectal excipulum. (E) Asci with ascospores. (F) Asci base. (G) Paraphyses and asci . (H) Amyloid reaction (in IKI). (I) Ascospores. (J) Colony on PDA. (K) Hyphae (1/3PDA).