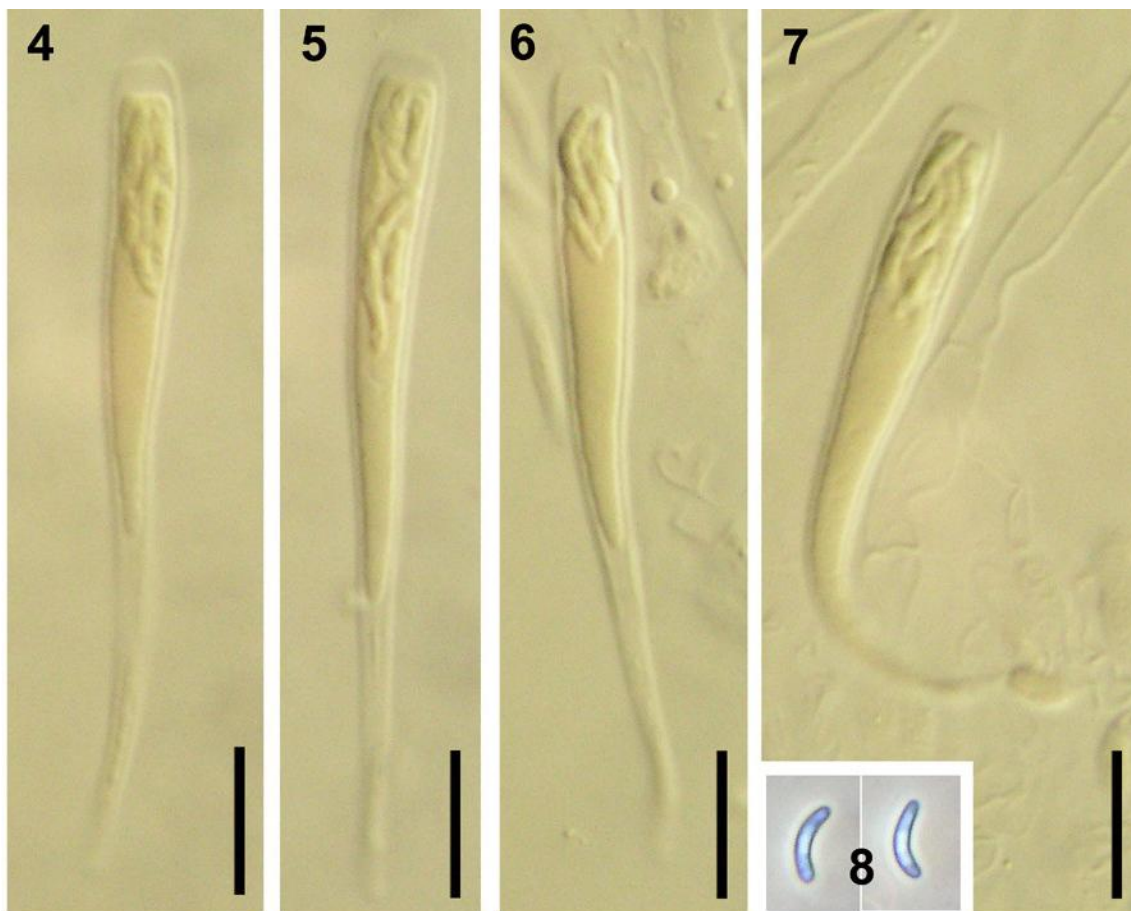
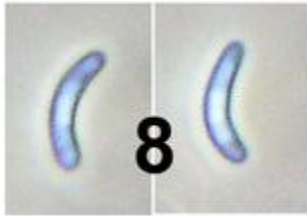
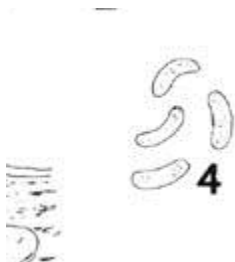


New genera in the *Calosphaeriales*: *Togniniella* and its anamorph *Phaeocrella*, and *Calosphaeriophora* as anamorph of *Calosphaeria*

Martina Réblová^{1*}, Lizel Mostert², Walter Gams² and Pedro W. Crous²



Ascospores suballantoid, 4.5–5 (mean \pm se = 4.8 ± 0.1) μ m, hyaline, aseptate, smooth, arranged in a fascicle in the upper part of the ascus.



ascospores from Barr's paper in *Mycologia*