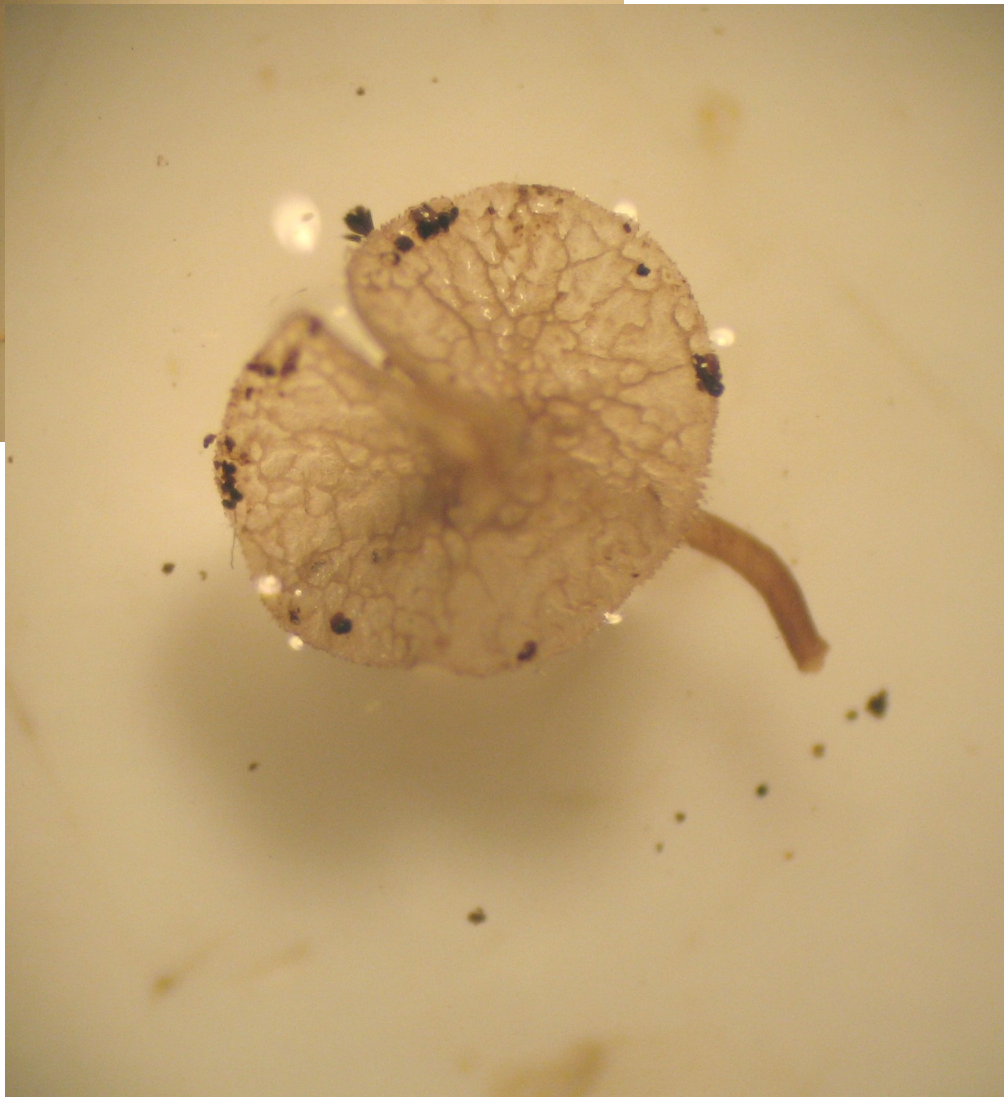
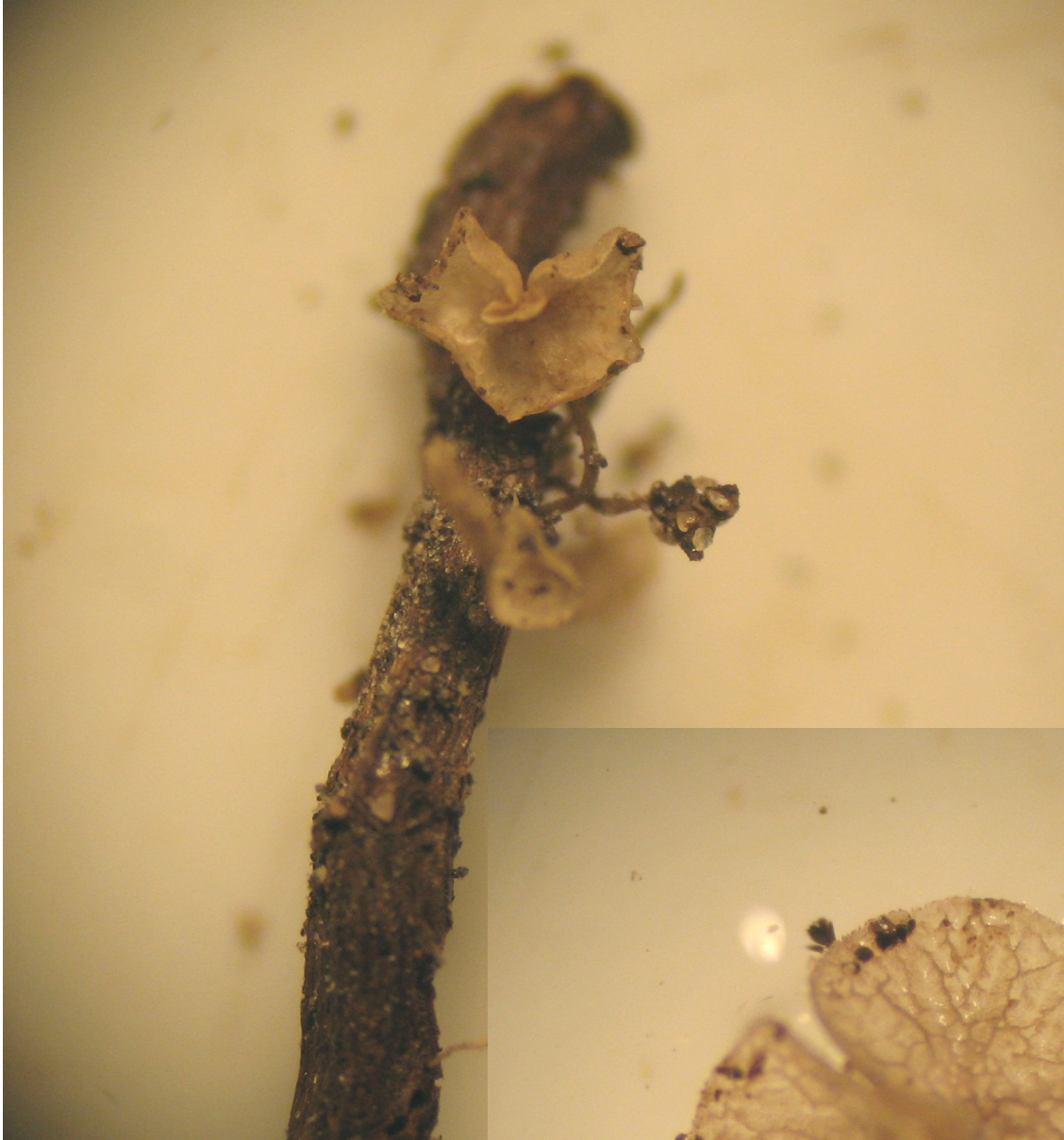


Collected 17/01/2014 Clumber Park Notts UK On root amongst litter. Near Oak and Pinus

Size across cup when rehydrated 2.5 mm stipe length about 3.5mm to attachment.



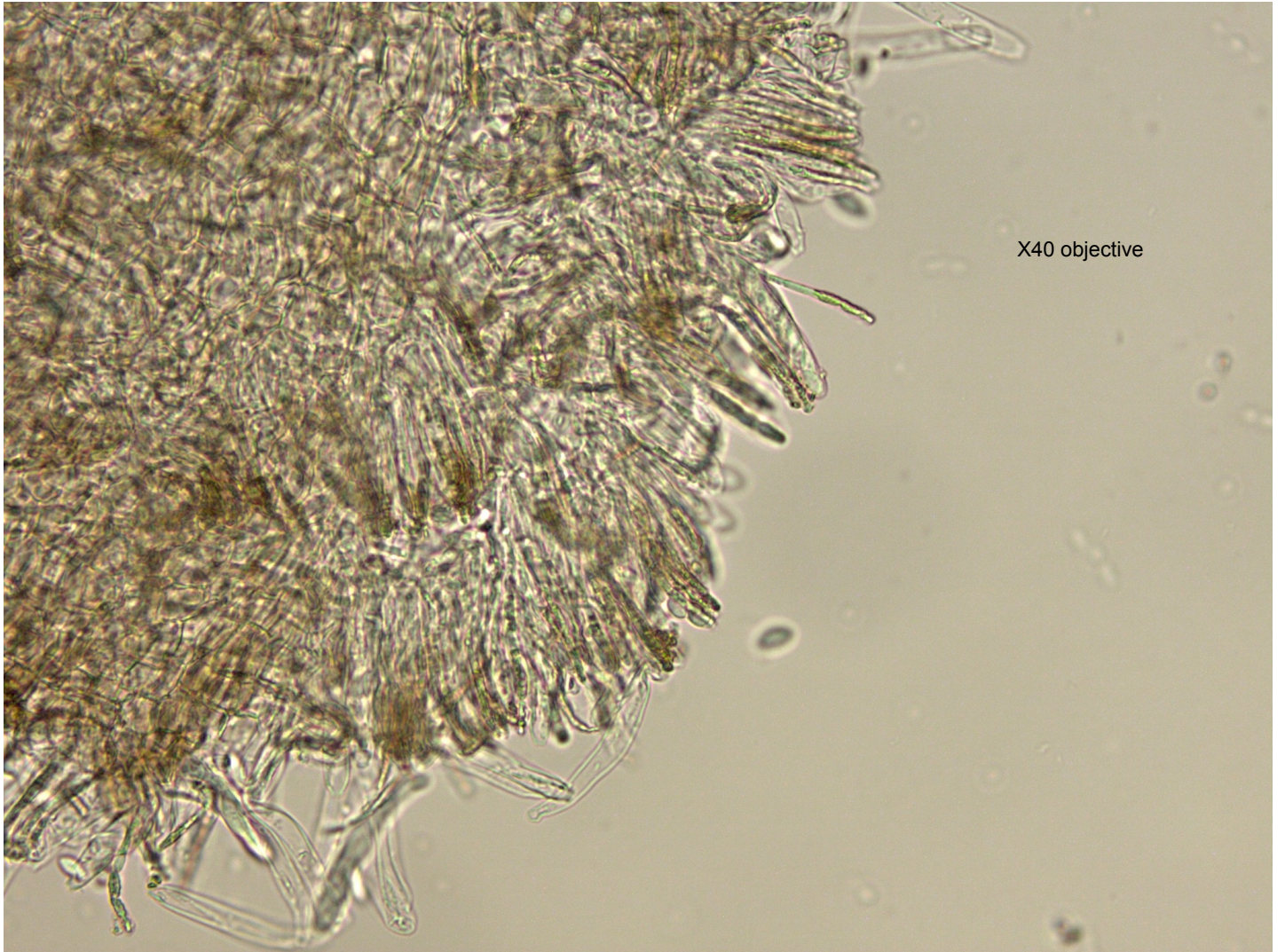
Appearing wrinkled or veined hyaline. Edge of cup serrated or fimbriate. Stipe attachment central, stipe darker than cap.

Appearing approx three cells thick. Texture prismatica with paraphyses or hairs on surface amongst asci.

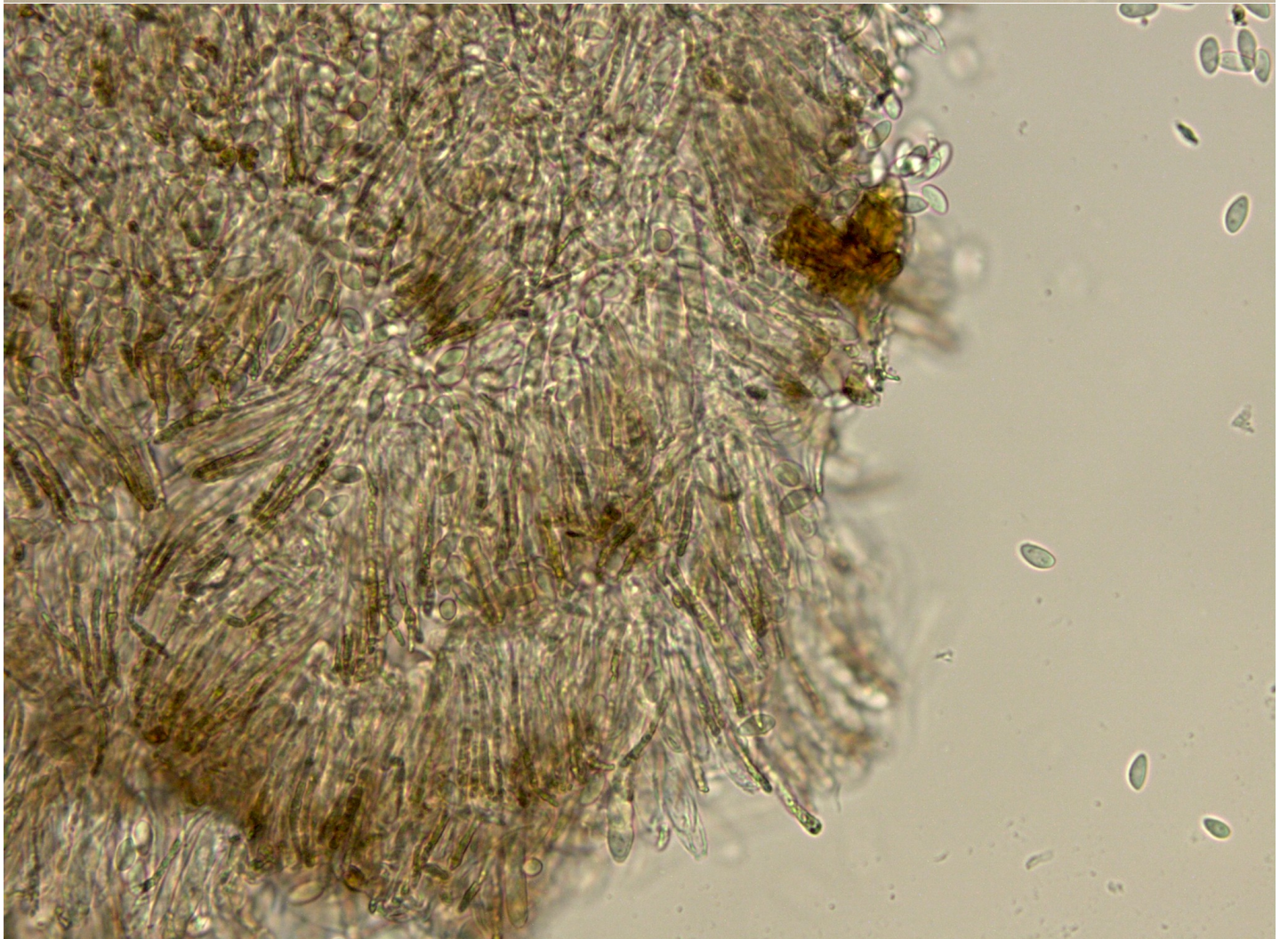
Spores approx $10 \times 5.2 \mu$ amyloid (Melzers) with two drops asymmetrical ellipsoid with pointed ends

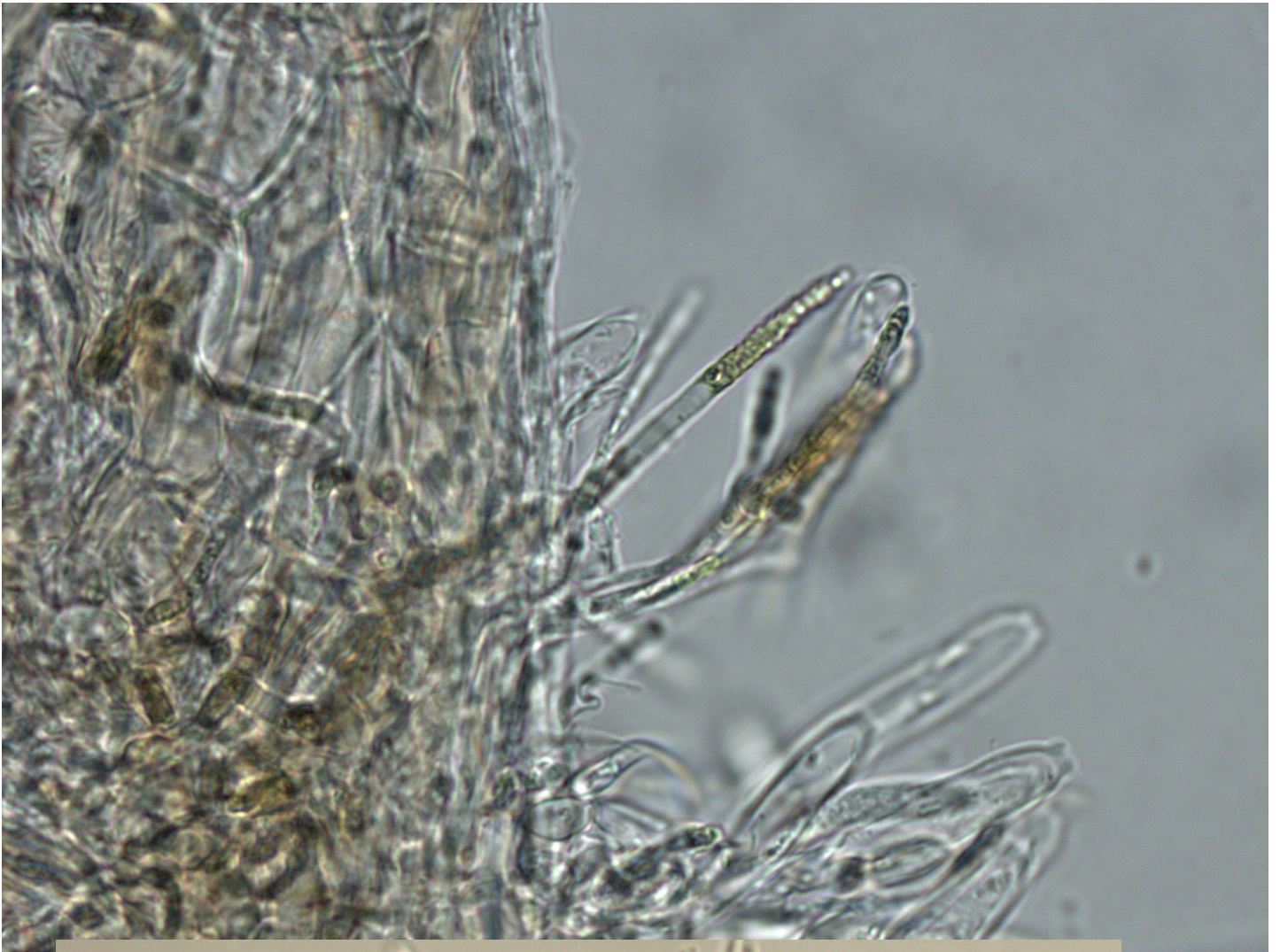
Ascus $45 \times 6 \mu$ tips simple, not appearing to have crochets at base, appearing thick walled? possibly blueing in Melzers unsure if this is filter?

Paraphyses or hairs with brown granular inclusions. These forked near base. Contents discolouring in Melzers.



X40 objective





Water mount x40



X100 objective

