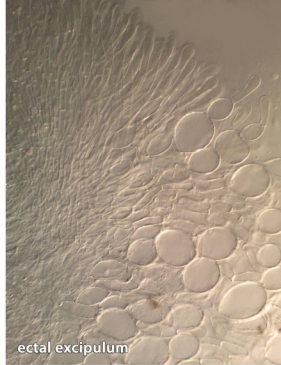
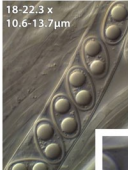




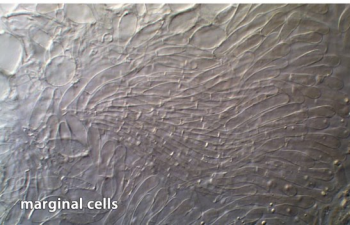
paraphysis tips



ectal excipulum



18-22.3 x
10.6-13.7 μm



marginal cells



IKI- (?)

Adelphella babingtonii
 (Sacc.) Pfister, Matočec & I. Kušan
 on wet fallen twig
 Hirst Mill Wood, Longwood valley
 near Huddersfield, West Yorkshire
 VC63; SE09591757; 197 metres O.D.
 22nd September 2014
 leg. & det. C.S.V. Yeates
 Hb. CSVY/F/2518